

Motorized Zone Valves

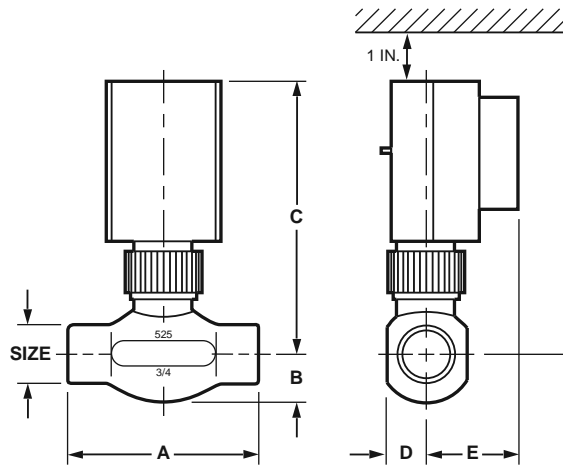
MZV Series Motorized Zone valves



Honeywell MZV Series is the first linear zone valve with a built-in balancing plug that permits pre-balancing for each zone.

- Rack and pinion linear design.
- Fast acting, 15 seconds to open, 5 seconds to close.

Dimensions in inches (millimeters)

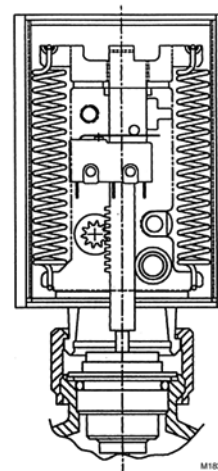


MZV SERIES	VALVE SIZE	DIMENSIONS IN INCHES (MM)				
		A	B	C	D	E
524	1/2 IN.	3-5/16 (84)	1 (25)	4-13/16 (122)	11/16 (17)	1-5/8 (4)
525	3/4 IN.	3-5/16 (84)	13/16 (21)	4-13/16 (122)	11/16 (17)	1-5/8 (4)
526	1 IN.	3-13/16 (97)	1 (25)	4-13/16 (122)	13/16 (21)	1-5/8 (4)
527	1-1/4 IN.	3-13/16 (97)	1 (25)	4-13/16 (122)	13/16 (21)	1-5/8 (4)

M232591

- Two piece rack design to extend service life.
- Low power consumption, 8 valves, 40 VA transformer.
- External valve position indicator.
- Quiet operation, no water hammer.
- Built-in tamper resistant balancing valve for pre-balancing.
- High torque, constant speed synchronous motor.
- Cooler running, longer life motor.
- Operator can be replaced without draining system.
- Manual opening feature.
- Replaceable valve cartridge.
- Large adjustable flow, 1/2 in. 3/4 in. Cv 5.8; 1 in. 7.0 Cv; 1-1/4 in. Cv 7.0.
- Motor CSA recognized.
- 4 wire operator with auxiliary switch.
- 2 wire without switch, 24 in. leads.
- Compatible with programmable thermostats.
- Bronze casting; brass/stainless trim.
- USA Patent Nos. 5,529,282; D369,650; 5,941,500; 6,032,924.
- UK Patent No. 2,052,382. 24 VAC, 60 Hz, 0.25 ampere.
- 30 mm collar (valve/actuator interface)

Patented long life rack and pinion design with built-in balancing valve



Application: Residential or Commercial Zoning for hot water heating or chilled water air conditioning systems, fan coil units or indirect water heater service.

Body Pattern: Two-way

Voltage: 24 Vac

Frequency: 60 Hz


Maximum Ambient Temperature: 125 F (52 C)

Maximum Water Pressure: 125 psi (862 kPa)

Product Number	Pipe Size		Capacity (Cv)	Connection Type	Auxiliary End Switch	Maximum Close-off Pressure (psi)
	(inch)	DN				
MZV524-T	1/2 in.	DN15	5.8 Cv	NPT	—	20 psi
MZV524E-T	1/2 in.	DN15	5.8 Cv	NPT	SPST	20 psi
MZV525	3/4 in.	DN20	5.8 Cv	Sweat	—	20 psi
MZV525-T	3/4 in.	DN20	5.8 Cv	NPT	—	20 psi
MZV525E	3/4 in.	DN20	5.8 Cv	Sweat	SPST	20 psi
MZV525E-T	3/4 in.	DN20	5.8 Cv	NPT	SPST	20 psi
MZV526	1 in.	DN25	7.0 Cv	Sweat	—	17.5 psi
MZV526-T	1 in.	DN25	7.0 Cv	NPT	—	17.5 psi
MZV526E	1 in.	DN25	7.0 Cv	Sweat	SPST	17.5 psi
MZV526E-T	1 in.	DN25	7.0 Cv	NPT	SPST	17.5 psi
MZV527	1 1/4 in.	DN32	7.0 Cv	Sweat	—	17.5 psi
MZV527E	1 1/4 in.	DN32	7.0 Cv	Sweat	SPST	17.5 psi

Motorized Zone Valves

MZV Series Replacement Parts

Product Number	Description	Voltage	Frequency	Maximum Close-off Pressure	Maximum Water Pressure		Maximum Ambient Temperature		
				(psi)	(psi)	(kPa)	(F)	(C)	
MZV520-RP	Replacement operator for MZV 524/525/526/527 with end switch	24 Vac	60 Hz	—	—	—	240 F	115 C	
MZV521-RP	Replacement operator for MZV 524/525/526/527 without end switch	24 Vac	60 Hz	—	—	—	240 F	115 C	
MZV525-RP	Replacement valve cartridge for 1/2 in. (MZV524, MZV524E) and 3/4 in. (MZV525, MZV525E) valves	24 Vac	60 Hz	20 psi	125 psi	862 kPa	240 F	115 C	
MZV526-RP	Replacement valve cartridge for 1 in. (MZV526, MZV526E) and 1 1/4 in. (MZV527, MZV527E) valves	24 Vac	60 Hz	17.5 psi	125 psi	862 kPa	240 F	115 C	
SZ07-070	Conversion kit, telestat to Powertrack (MZV). Order with MZV520-RP. Includes adapter ring and shaft extension.	—	—	—	—	—	—	—	

Hydronic Controls