

SUBMITTAL DATA: PLA-A12BA4

12,000 BTU/H CEILING CASSETTE UNIT FOR MXZ MULTI-ZONE HEAT-PUMP SYSTEMS

Job Name:

System Reference:

Date:



Indoor Unit: PLA-A12BA4

GENERAL FEATURES

- Compact side-discharge outdoor unit
- Quiet operation—indoor and outdoor units
- Built-in drain lift mechanism for condensate removal; lifts to 33-7/16"
- Wide air flow pattern for better air distribution
- Auto wave airflow in heating mode—unit independently cycles through horizontal and vertical positions for more even heat distribution
- Independent vane adjustment
- Automatic fan speed control
- Limited warranty: five years parts and seven years compressors

OPTIONAL ACCESSORIES

Indoor Unit

- ☐ Condensate Pump (BlueDiamond X87-711/721; 115/230V)
- ☐ Condensate Pump (Saueremann SI30-115/230; 115/230V)
- ☐ i-see Sensor Corner Panel (PAC-SA1ME)
- ☐ Multi-function Casement (PAC-SH53TM)
- ☐ Air Outlet Shutter Plates (PAC-SH51SP)
- ☐ High-efficiency [MERV 10] Filter (PAC-SH59KF; req. PAC-SH53TM)

Controller Options

- ☐ Wireless Wall-mounted Remote Controller Kit (MHK1)**
- ☐ Portable Central Controller (MCCH1)**
- ☐ Outdoor Air Sensor (MOS1)**
- ☐ Wired Wall-mounted Controller (PAR-31MAA)**
- ☐ Simple MA Remote Controller (PAC-YT53CRAU)**
- **See Submittal for information on each option.
- ☐ M-NET Adapter (PAC-SF83MA)
- ☐ CN51 Connector for Multiple Remote Controller Adapters
- ☐ Duct Fan Controller (PAC-725AD)
- ☐ CN32 Connector for Remote On/Off (PAC-715AD)
- ☐ Remote Temperature Sensor (PAC-SE41TS)
- ☐ Remote Operation Adapter - Display and On/Off (PAC-SF40RM)
- ☐ Hand-held Wireless Remote Controller (PAR-FL32MA; req. PAR-SA9FA-E)
- ☐ Wireless Signal Receiver Module (PAR-SA9FA-E)
- ☐ Lockdown Bracket for Hand-held Controller (RCMKP1CB)
- ☐ Control/Service Tool (PAC-SK52ST)

SPECIFICATIONS

Cooling Capacity* 12,000 Btu/h

Heating Capacity at 47°F* 14,000 Btu/h

* Rating Conditions per AHRI Standard

Cooling | Indoor: 80° F (27° C) DB / 67° F (19° C) WB

Cooling | Outdoor: 95° F (35° C) DB / 75° F (24° C) WB

Heating at 47°F | Indoor: 70° F (21° C) DB / 60° F (16° C) WB

Heating at 47°F | Outdoor: 47° F (8° C) DB / 43° F (6° C) WB

(For data on specific indoor units [all ducted, all non-ducted, and both ducted and non-ducted] combinations, see the MXZ Technical and Service Manual.)

Electrical Requirements

Power Supply 208 / 230V, 1-Phase, 60 Hz

MCA 1 A

Voltage

Indoor - Outdoor S1-S2 AC 208 / 230V

Indoor - Outdoor S2-S3 DC ±24V

Fan Motor (ECM) 0.51 F.L.A.

Airflow (Lo - M1 - M2 - Hi) 390 - 420 - 460 - 530 Dry CFM

350 - 390 - 420 - 490 Wet CFM

Sound Level (Lo - M1 - M2 - Hi) 27 - 28 - 29 - 31 dB(A)

DIMENSIONS	UNIT INCHES / MM	PANEL INCHES / MM
W	33-1/16 / 840	37-3/8 / 950
D	33-1/16 / 840	37-3/8 / 950
H	10-3/16 / 258	1-3/8 / 35

Weight (Unit/Grille)

lbs. 49 / 13

kg. 22 / 6

Field Drainpipe Size O.D. 1-1/4" / 32 mm

Refrigerant Type R410A

Refrigerant Pipe Size O.D.

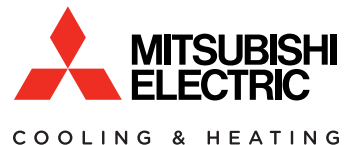
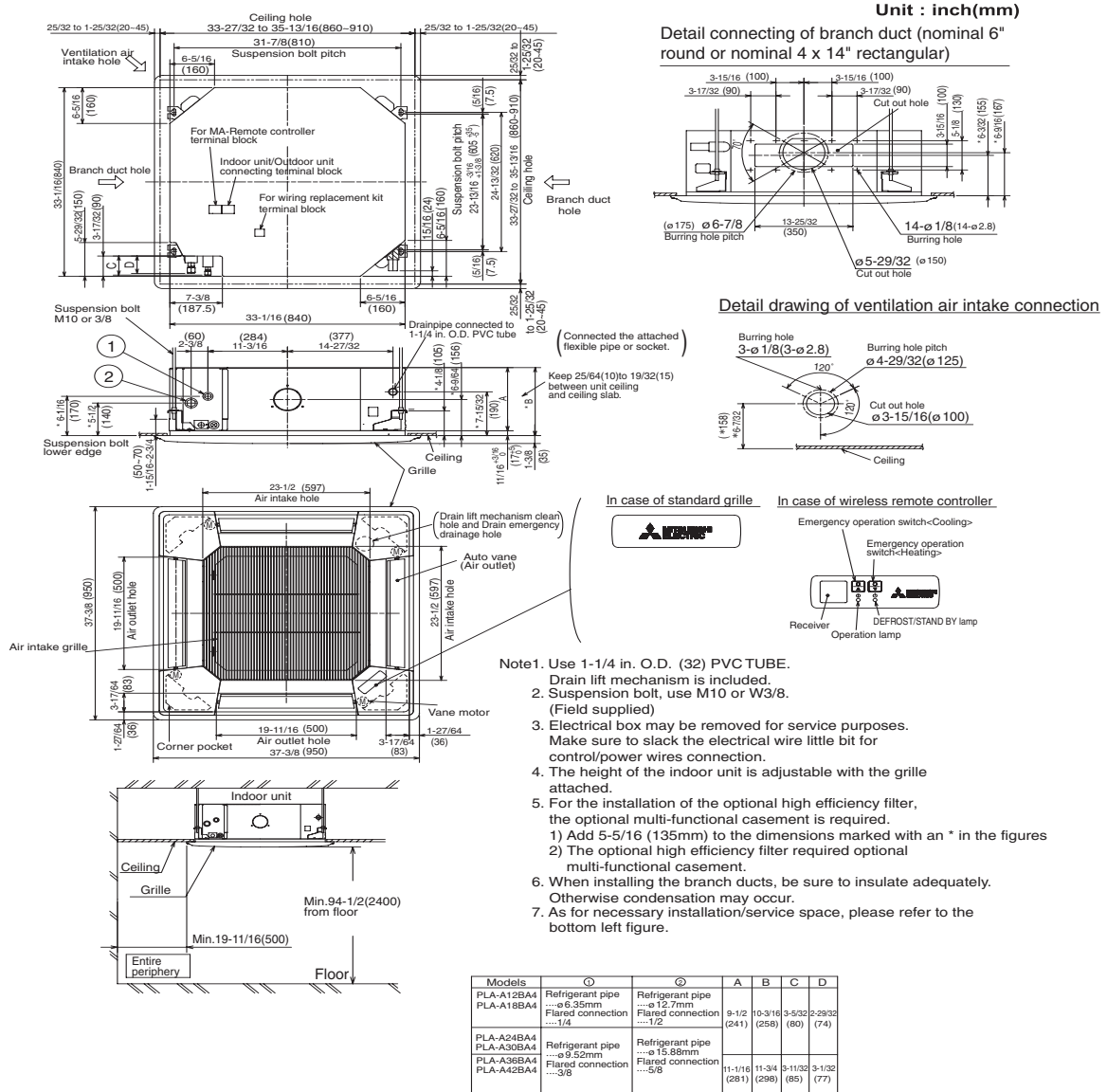
Gas Side 1/2" / 12.7 mm

Liquid Side 1/4" / 6.35 mm

Connection Method Flared



DIMENSIONS: PLA-A12BA4



1340 Satellite Boulevard
 Suwanee, GA 30024
 Toll Free: 800-433-4822
 www.mehvac.com