

Instructions for Assembling Replacement Venter Motor and Motor Mounting Plate

Applies to Replacement Kits, P/N's 132377, 132378, and 132379 for (C)(H)(HC)RP/RPV
Series 3, 5, and 6 heaters and (H)(S)SC; SC(A)(B)(E) Series 3 and 5 heaters

WARNING: Turn off the gas and the electric before servicing any heater.

All service should be performed by a qualified service technician.

Description/ Application

These instructions apply to the replacement kits listed above. Each kit includes a venter motor with a capacitor and a hardware bag including a selection of mounting plates.

Prior to installation on the heater, the replacement venter motor must be attached to a new mounting plate. To be multifunctional, the hardware package in each kit includes four motor mounting plates that are used with all voltages of motors. Selection of the appropriate mounting plate depends on the model and size of furnace being serviced.

Components

Qty	Description
1	Venter Motor and Capacitor Assembly
4	Motor Mounting Plates, one each of P/N 131445, 131446, 131447, and 131448
2	Locking Nuts #8-32, P/N 31522

Instructions

1. Verify Voltage Agreement

Check the replacement motor label and the heater rating plate to verify agreement of the motor voltage and the supply voltage of the furnace being serviced.

Kit P/N's		132377	132378	132379	132377
Supply Voltage		115V	208V and 230V	460V	575V
Venter Motor Assembly in the Kit		131410	131415	165986	131410
Venter Motor Assembly includes:					
Venter Motor	Reznor P/N	163891	163892	163893	163891
	Magnetek	JE1F026	JE1F027	JE1F026	JE1F026
Capacitor		Reznor P/N163894; Magnetek #60P52-561-8			

2. Select the Motor Mounting Plate

Refer to **APPLICATION TABLES 1, 2, 3, and 4** and locate the Model/Size of furnace being serviced. (NOTE: These instructions do not apply to RPV or SC Models prior to Series 3.) Measure each plate in the kit comparing its size and hole size to the dimensions on the drawing. Select the mounting plate that applies to the furnace being serviced. (The other three mounting plates will not be used.)

APPLICATION TABLE 1

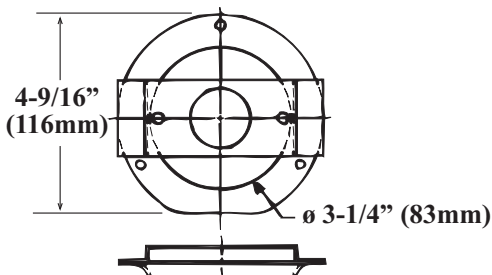
Applies to:		
Model	Sizes	Application Details
RP	125 - 350	460V furnaces manufactured prior to 3/94 (Serial No. Code ATC); 115/208/230/575V furnaces manufactured prior to 7/94 (Serial No. Code ATG)
CRP	125 - 300	
HRP	125 - 350	
HCRP	125 - 300	
RPV	125 - 350	Series 3, 5, and 6 only
CRPV	125 - 300	
HRPV	125 - 350	
HCRPV	125 - 300	

Select

Mounting

Plate P/N

131445



Technical drawing of the mounting plate 131445. The top view shows a circular plate with a central circular hole and four mounting holes. The outer diameter is dimensioned as 4-9/16" (116mm). The inner diameter of the central hole is dimensioned as ø 3-1/4" (83mm). The side view shows the plate's profile, which is a flat circular disc.

APPLICATION TABLE 2

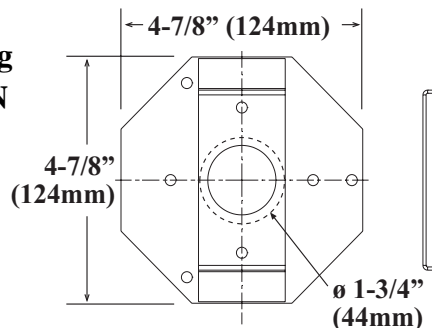
Applies to:		
Model	Size	Application Details
CRP	400	460V furnaces manufactured prior to 3/94 (Serial No. Code ATC); 115/208/230/575V furnaces manufactured prior to 7/94 (Serial No. Code ATG)
HCRP	400	
CRPV	400	Series 3, 5, and 6 only
HCRPV	400	

Select
Mounting
Plate P/N
131446

Instructions (cont'd)

APPLICATION TABLE 3

Applies to:			Select Mounting Plate P/N 131447
Model	Size	Application Details	
SC	125-300	Series 3 and 5 only	
HSC	125-300		
SCA	125-300		
SCB	125-300		
SCE	125-300		
SSC	250-300	Duct furnaces in packaged Models SSCBL 500 and 600	

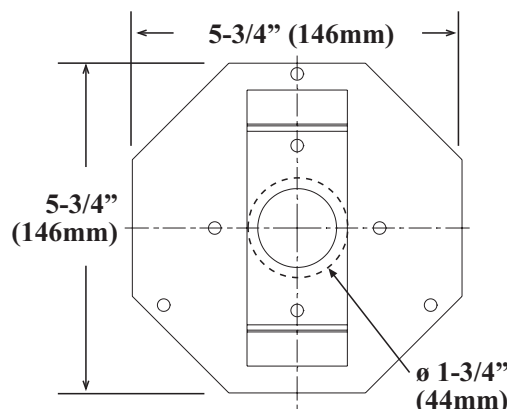


APPLICATION TABLE 4

Applies to:		
Model	Size	Application Details
RP	400	460V furnaces manufactured prior to 3/94 (Serial No. Code ATC); 115/208/230/575V furnaces manufactured prior to 7/94 (Serial No. Code ATG)
HRP	400	
RPV	400	Series 3, 5, and 6 only
HRPV	400	
SC	350-400	Series 3 and 5 only
HSC	350-400	
SCA	350-400	
SCB	350-400	
SCE	350-400	
SSC	350-400	Duct furnaces in packaged Models SSCBL 500 and 600

Select Mounting Plate P/N 131448

Select Mounting Plate P/N 131448



3. Remove the Venter Motor Assembly

Mark and disconnect the venter motor wires. Remove the venter motor assembly from the heater, saving all hardware including the support ring on SC Series Models (See FIGURE 1).

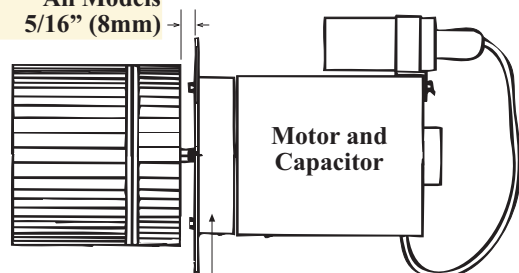
4. Assemble the New Motor and the Mounting Plate Selected in Step No. 2

Model Series RP/RPV - With the rectangular bracket toward the motor, position the motor mounting plate assembly over two of the motor studs. Use the locking nuts in the kit to attach the motor studs to the bracket.

Model Series SC - Re-use the spacers and support ring from the original assembly. Place the spacers over the motor studs and the support ring over the bracket on the mounting plate. With the rectangular bracket and support ring toward the motor, position the motor mounting plate assembly over two of the motor studs. Use the locking nuts in the kit to attach the motor studs to the bracket.

FIGURE 1 - Assemble Motor and Plate and Attach to the Venter Wheel

IMPORTANT:
All Models
5/16" (8mm)



Motor Support Ring, P/N 125346,
required on SC Series Models only.

SC Series Models - **IMPORTANT:** When attaching the motor to the plate, slide the spiral spacers over the motor studs and install the motor support ring.

5. Install the Replacement Venter Motor Assembly

Re-use the hardware to attach the venter wheel to the motor shaft. Always leave a 5/16" gap between the wheel and the motor mounting plate (See FIGURE 1).

Make wiring connections according to the wiring diagram.

Replace all panels.

Follow the instructions on the lighting instruction plate to re-light the furnace.

**CHECK ALL SAFETY FEATURES FOR
PROPER OPERATION.**