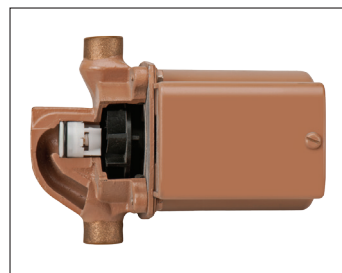
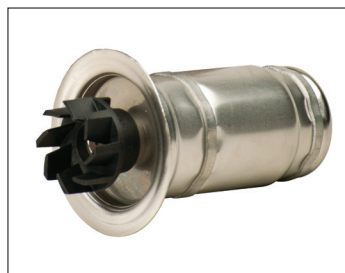
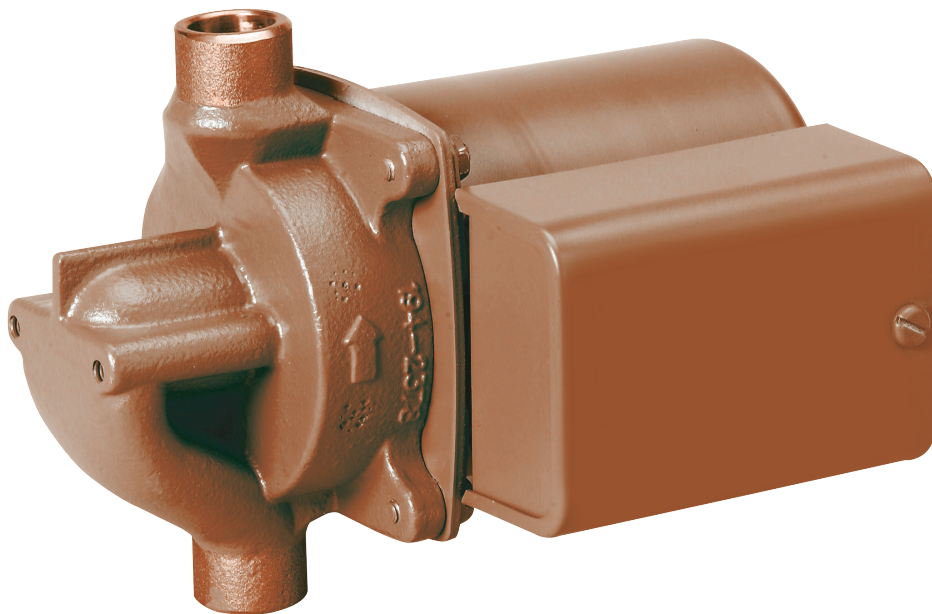


Model 003-IFC® Cartridge Circulator

The compact Taco 003-IFC with an Integral Flow Check is designed for circulating hot and chilled fresh water in open and closed loop applications. With its patented location at the impeller inlet, the IFC eliminates the added installation costs of a separate in-line flow check, simplifies piping and improves system performance. The unique, replaceable cartridge contains all moving parts and is easy to service instead of replacing the entire unit. The self-lubricating, maintenance free design provides quiet, efficient operation and unmatched reliability.



Low-Lead
Compliant



Submittal Data # 101-082
 Supersedes: 06/01/11

Effective: 04/03/13

Features

- Integral Flow Check (IFC®)
Patent #5,664,939
 - Prevents gravity flow / reverse flow
 - Eliminates separate in-line flow check
 - Reduces installed cost
 - Improves system performance
 - Easy to service
- Unique replaceable cartridge -
Field serviceable
- Unmatched reliability-Maintenance free
- Quiet, efficient operation
- Self lubricating, No mechanical seal
- Wide range of applications
- 1/2", 3/4" Sweat, or Union connections

Materials of Construction

Casing (Volute): Low-Lead Bronze or St. Steel
 Integral Flow Check (IFC®):
 Body, Plunger.....Acetal
 O-ring Seals.....EPDM
 SpringStainless Steel
 Stator Housing:.....Steel
 Cartridge:.....Stainless Steel
 Impeller:.....Non-Metallic
 Shaft:.....Ceramic
 Bearings:.....Carbon
 O-Ring & Gaskets:.....EPDM - Chlorine Resistant

Model Nomenclature


BC – Bronze, Panel Mount Tappings
 SC – Stainless Steel, Union Connection,
 Panel Mount Tappings
 IFC– Integral Flow Check

Performance Data

Flow Range: 0 - 6 GPM
 Head Range: 0 - 4.5 Feet
 Minimum Fluid Temperature: 40°F (4°C)
 Maximum Fluid Temperature: 220°F (104°C)
 Maximum Working Pressure: 125 psi
 Connection Sizes: 1/2", 3/4" Sweat, Union Mount

Certifications & Listings

 **US LISTED** FOR INDOOR USE ONLY

 **Low-Lead Compliant**
Certified to NSF/ANSI 372

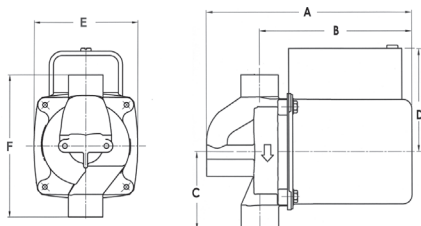
Application

- Domestic Hot Water Recirculation
- Hydro-Air Fan Coils
- Heat Recovery Units
- Water Source Heat Pumps
- Potable Water Systems

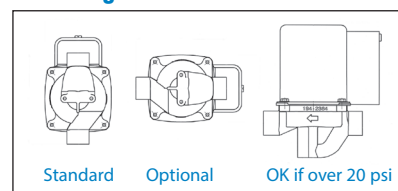
The 003-IFC with an Integral Flow Check (IFC®) is designed for the circulation of hot or chilled fresh water in open or closed loop applications. The IFC feature simplifies piping, eliminates separate in-line flow check, reduces installation costs and improves system performance. With its patented location at the impeller inlet, the IFC is easy to service without removing the entire unit from system piping. The unique, replaceable cartridge contains all of the moving parts and allows for easy service instead of replacing the entire circulator.

Pump Dimensions & Weights

Models	Conn.	A		B		C		D		E		F		Ship Wt.	
		in.	mm	in.	mm	in.	mm	in.	mm	in.	mm	in.	mm	lbs.	Kg
003-BC4-1-IFC	1/2" Swt.	6	152	4-7/8	124	2-3/16	56	2-15/16	75	3-5/16	84	4-3/8	111	6.0	2.7
003-BC4-IFC	3/4" Swt.	6	152	4-7/8	124	2-3/16	56	2-15/16	75	3-5/16	84	4-3/8	111	6.0	2.7
003-SC4-IFC	Union	6	152	4-7/8	124	2-3/16	56	2-15/16	75	3-5/16	84	5-15/16	151	6.0	2.7



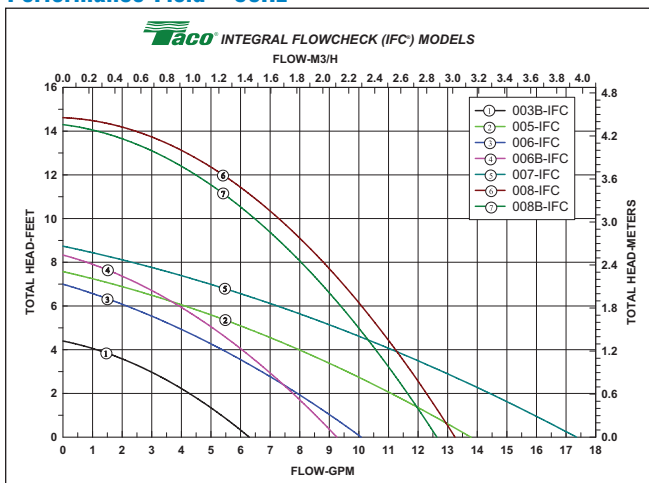
Mounting Positions



Electrical Data

Model	Volts	Hz	Ph	Amps	RPM	HP
All 003 Models	115	60	1	.45	3250	1/40
Motor Type	Permanent Split Capacitor Impedance Protected					
Motor Options	220/50/1, 220/60/1, 230/60/1, 100/110/50/60/1					

Performance Field - 60Hz




Do your best work.